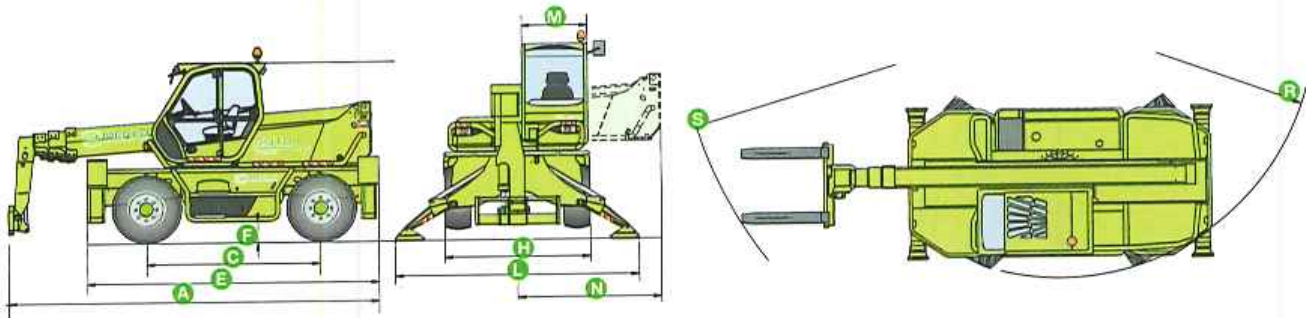


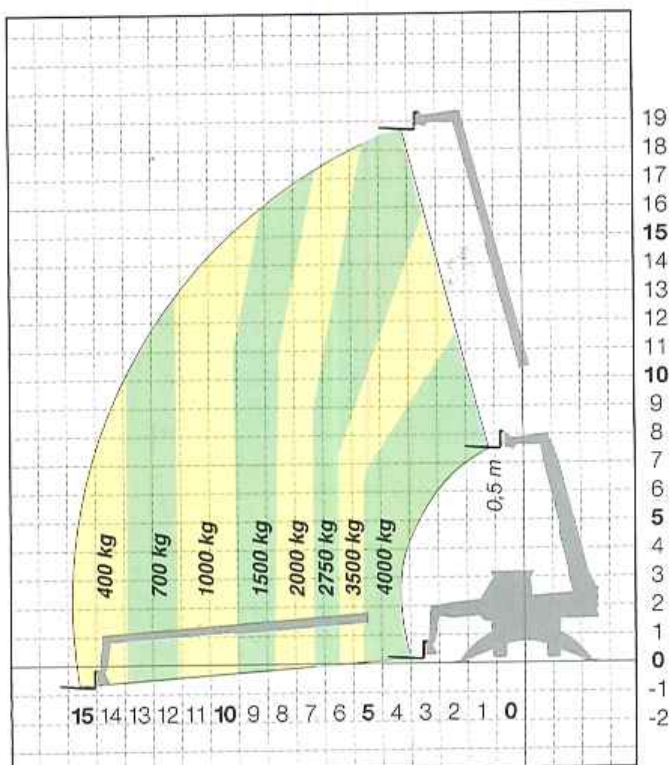
ROTO 40.18 S



DIMENSIONI ROTO 40.18 S

A (mm)	5977	H (mm)	2240	P (mm)	2960
C (mm)	2760	L (mm)	3750	R (mm)	3920
E (mm)	4645	M (mm)	995	S (mm)	5750
F (mm)	350	N (mm)	2220		

ROTO 40.18 S FORCHE SU STABILIZZATORI SU 360°



ROTO 40.18 S FORCHE SU PNEUMATICI FRONTALE

